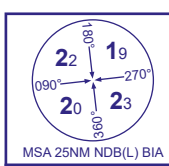
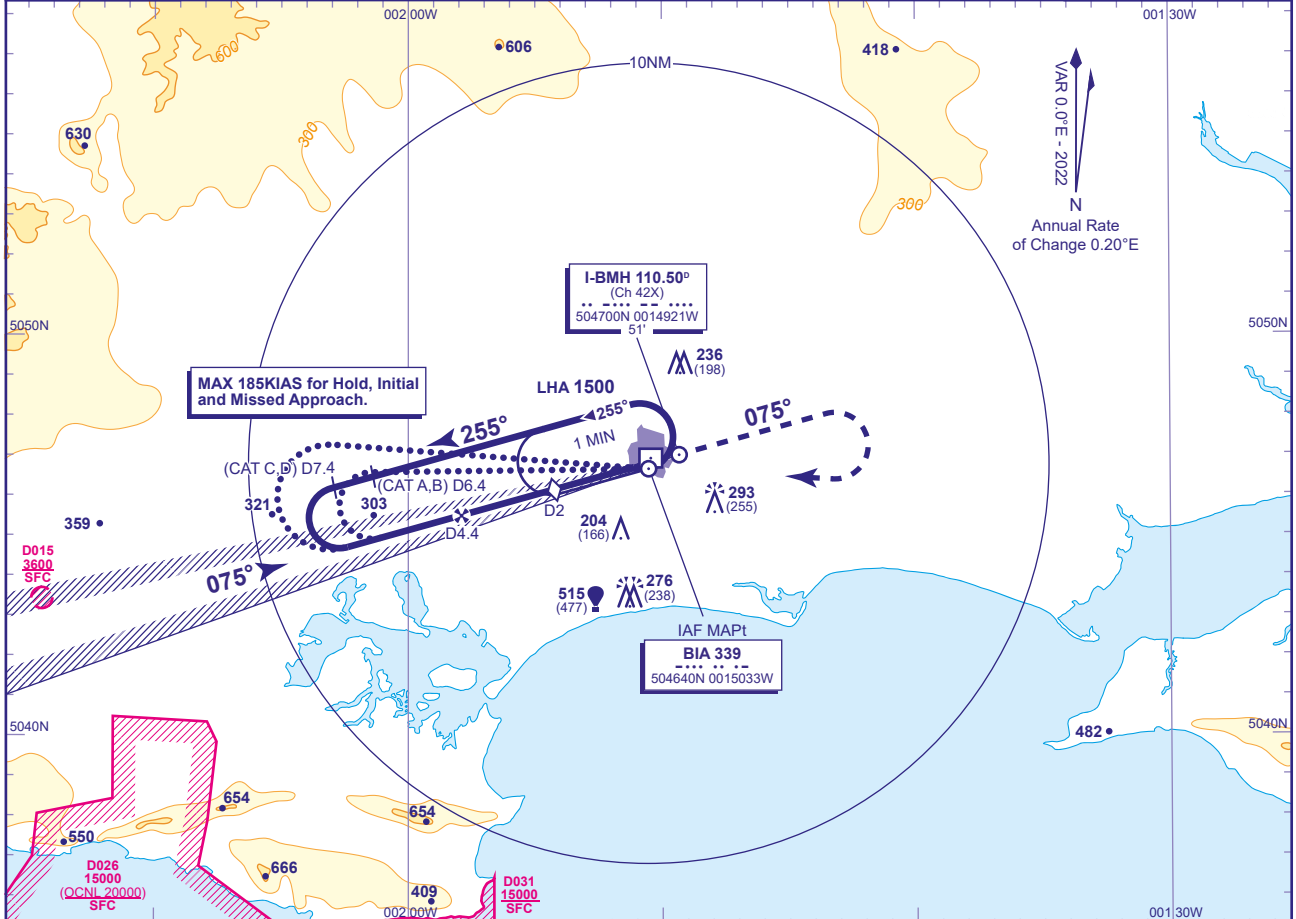


## INSTRUMENT APPROACH STAFF - ICAO

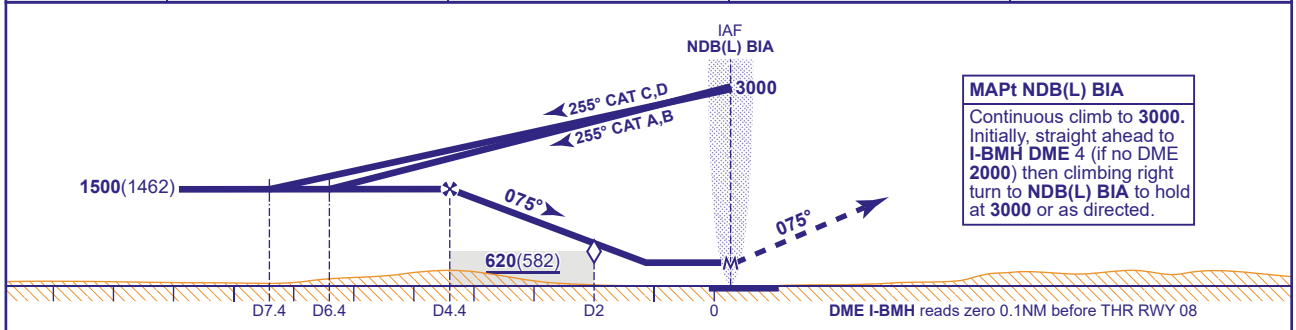
BOURNEMOUTH  
LOC/DME/NDB(L)  
RWY 08  
(ACFT CAT A,B,C,D)

APP	119.475 (120.230 SOLENT)	BOURNEMOUTH APPROACH	AD ELEVATION	38
TWR	125.600	BOURNEMOUTH TOWER	THR ELEVATION	38
	121.700	BOURNEMOUTH GROUND	OBSTACLE ELEVATION	293 AMSL (255) (ABOVE THR)
RAD	119.475 (118.650 DIRECTOR)	BOURNEMOUTH RADAR		
ATIS	133.725	BOURNEMOUTH INFORMATION	BEARINGS ARE MAGNETIC	

TRANSITION ALTITUDE  
6000 (See Note 2)

RECOMMENDED PROFILE Gradient 5.24%, 318FT/NM

DME I-BMH	4	3	2 (SDF)	1
ALT(HGT)	1390(1352)	1070(1032)	750(712)	430(392)



**MAPt NDB(L) BIA**  
Continuous climb to **3000**. Initially, straight ahead to **I-BMH DME 4** (if no DME **2000**) then climbing right turn to **NDB(L) BIA** to hold at **3000** or as directed.

Aircraft Category	A	B	C	D	Rate of descent	G/S KT	160	140	120	100	80
OCA (OCH)	WITH DME	380(342)	380(342)	380(342)	380(342)	FT/MIN	850	740	640	530	420
	NO DME	670(632)	670(632)	670(632)	670(632)						
VM(C)OCA (OCH AAL)	Total Area	600(562)	600(562)	1000(962)	1000(962)						

**ALTERNATIVE BASETURN Procedure**  
From overhead NDB(L) BIA (IAF) not below **3000** fly outbound on QDM 270° (CAT A,B), 275° (CAT C,D) descending to **1500**. At I-BMH DME 6.4 (CAT C,D DME 7.4) baseturn left to establish on the LOC. Once established continue as for main procedure.

**AIRCRAFT UNABLE TO RECEIVE DME I-BMH**  
Advise ATC. As for main and alternative procedures with DME except fly outbound prior to base turn for 3MIN (CAT A,B) and 2MIN (CAT C,D). When established on localiser descend to MDH.

**NOTE**  
1 This procedure and its associated protection areas are not totally contained within Controlled Airspace.  
2 Outside hours of operation of Solent CTA the transition altitude is **3000**.  
3 Aircraft will normally be required to hold not lower than **3000**.

**CHANGE (9/20):** MAG VAR. ANNUAL RATE OF CHANGE. MAG TRACKS. I-BMH LOC COORDINATES.